

Housing in Pantin

Vegetable Cave

Type: Hybrid Skin

Material: Larch

Location: France

Architects: Benjamin Fleury Architect Urbaniste

Client: Foncière Logement

Completion Time: 2014

Area : 574 m²

Cost : € 1,253,000 HT



benjaminfleury

ArchitectUrbaniste

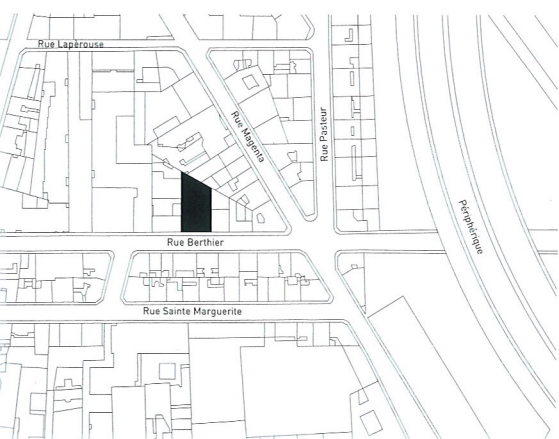
Graduated at the School of Architecture Paris Belleville in 2000 and trained for five years at the agency Chemetov Paul, where he worked on urban studies and housing projects, Benjamin Fleury founded his workshop in 2004. Pursuing in the double discipline, architecture-urbanism, the architectural office has completed four housing buildings, one housing rehabilitation and a public square. At the same time, the urban planning cell of the workshop operates different studies in the metropolitan area of Paris, especially focusing his interest on the peripheral districts. Since his opening, the architectural office has focused on the social evolutions and mutations, through the urban and architectural project. The analysis of customs and of the transformations in lifestyles, the study of the context and of environmental inputs, as well as the consideration of the economy in the choice of morphological and constructive solutions, constitutes the base of the project. Acting this way, the geographic parameters are taken into account, the cultural references are expressed, the needs of the program satisfied and the economic restraints respected. On this approach are based the specific solutions, contemporary and easy to read, that are intended to generate direct reactions based on the sensations raised by the project.

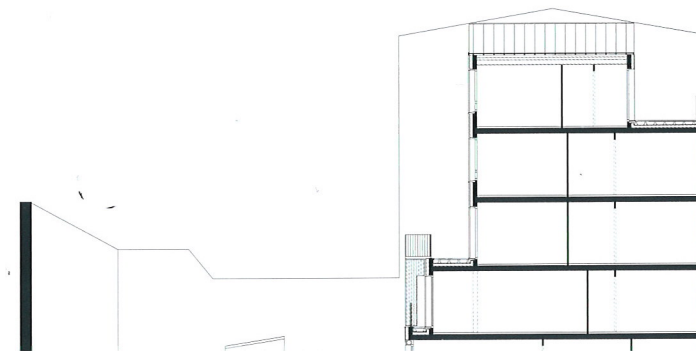
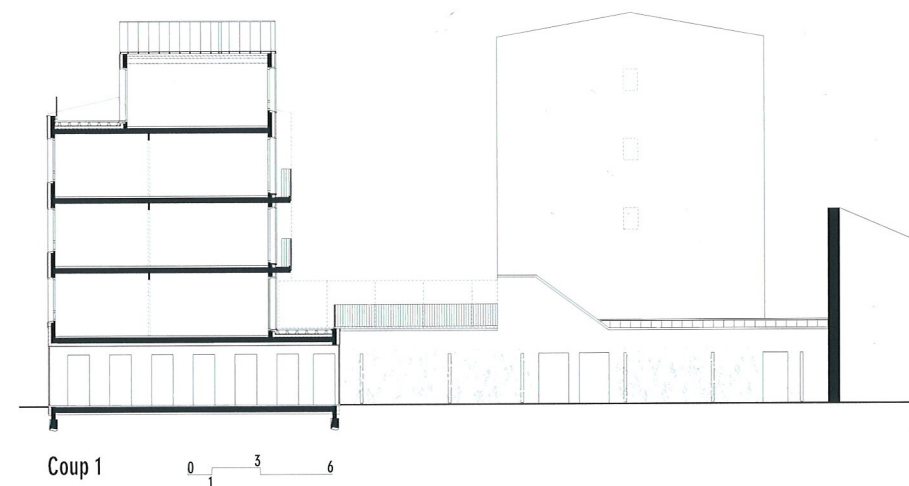
PROJECT BRIEF

The district of Quatre-Chemins is an old suburb in which lives a disadvantaged population and where is concentrated a degraded housing environment. Situated in a difficult urban area, this district is the object of a vast program of urban renovation which wants to reduce the number of unhealthy housing environment. In this context, "Foncière Logement" produces three diffuses operations that propose big rented apartment for rent for employees with good income, favoring the social mixing inside the district. The trapezoid shape of the plot of land which has a strongly acute angle, in combination with a big height of limits, confers to the place a sensation of strangeness that the designers wish to sublimate rather than suffer from it. To make it happen, the necessary plastic moderation of the road's side is replaced by a play of complexities so as to dramatize this incongruous place.



Contemporary reinterpretation of the base with use of a white varnished brick, straight adjacent ledge. Access by a hall similar to the neighboring building offers a length of the land's plot.





The body is in plaster and the windows proportions that combine double and single openings are the same of the left building. The windows' frames are similar to those of the opposite building. The three moves of windows as well as the shutters animate the composition and at the same time they underline the contemporary character of the building.

On the left, the building's height aligns on the nearby building. On the right, the attic with a three meters move from the façade, align on the right building's height.

The wooden shutters can be randomly opened by the inhabitants, constantly transforming the composition of the façade. , And when those shutters are closed, they transform the volume into an unusual closed box.

Skin Analysis

The wish to settle in this district a wealthy population must be followed by a specific architectural writing, with a precise, sober and respectful insertion. To reach that purpose, the facade on street has a contemporary vocabulary proposing different typical themes of historical suburb: the base, the body and the roof. The facade adopts the style of the "Suprematist Composition - White on White" of Malevich. Locks, plaster, brick and glass (for the fixed parts) possess all their own declination of white, the dominant color of suburb. •A play of folds gives a rhythm to the various levels of the facade. These folds, by widening or by contracting, create external spaces facing south, for every apartment. This play of volume allows, at the same time, to personalize every apartment. On the left, the base stretches up to the lateral façade and on the right side the



On these slants as well as in the chinks of the slatted covering, the sun hangs on its shadows that sculpture differently the volumes following the slope of its way.

